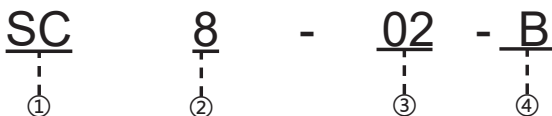


型式表示方法



①接头型号

②配套管材直径

| | | | | | | |
|--------|----|----|----|-----|-----|-----|
| 代码 | 4 | 6 | 8 | 10 | 12 | 16 |
| 管长 (m) | Ø4 | Ø6 | Ø8 | Ø10 | Ø12 | Ø16 |

③螺纹规格

| 类型 | 公制螺纹 | | | 55° 椎管螺纹 | | | | 55° 直管螺纹 | | | | | |
|----|--------|--------|------|----------|------|------|------|----------|------|------|------|------|------|
| 代码 | M3 | M5 | M6 | 01 | 02 | 03 | 04 | 06 | G01 | G02 | G03 | G04 | G06 |
| 规格 | M3X0.5 | M5X0.8 | M6X1 | R1/8 | R1/4 | R3/8 | R1/2 | R3/4 | G1/8 | G1/4 | G3/8 | G1/2 | G3/4 |

④控制方法

| | |
|---|---------------------------|
| A | 排气节流控制在调节轮上面有 OUT 字样或无符号。 |
| B | 进气节流控制在调节轮上面有 B 字样。 |

产品特点

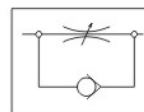
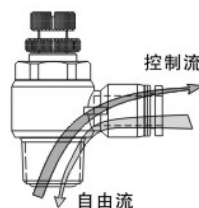
- 执行元件的速度控制器。
- 镀镍的铜体可以防腐蚀和污染。
- 所有 R 和 NPT 螺纹胶都起密封作用。
- 所有直螺纹都用标准的 O 型圈。

技术规格

| | |
|--------|-----------------|
| 使用流体 | 空气、水 (有条件) |
| 工作压力范围 | 0~1.0Mpa |
| 使用真空压力 | -100Kpa(10Torr) |
| 工作温度范围 | 0~60°C |

1. 排气节流控制

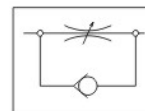
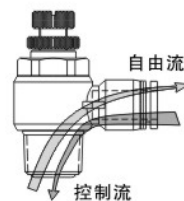
控制从螺纹端进入的空气 □ 从接头端进入空气自螺纹端 流出不受控制。



例 □ SC8-03

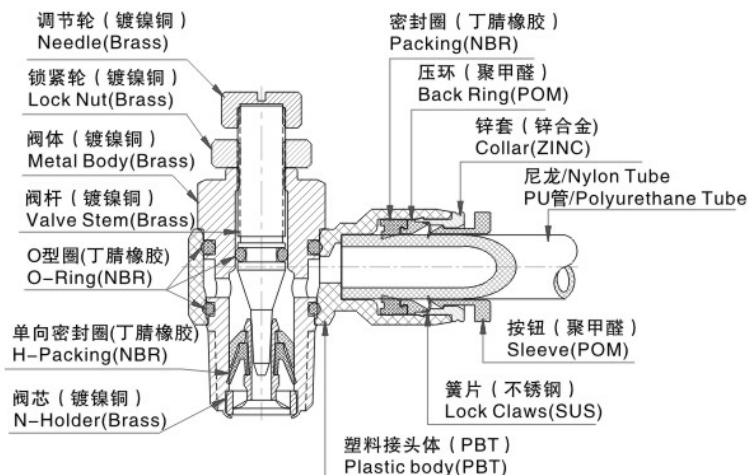
2. 进气节流控制

控制从接头端进入的空气 □ 从螺纹端进入空气自接头端 流出不受控制。



例 □ SC8-03-B

结构示意图

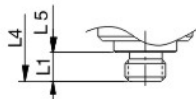
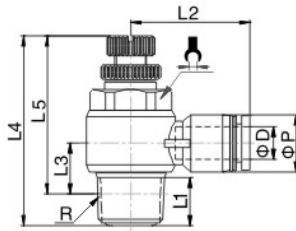


节流阀


Series

带快插接头的单向节流阀

SC 节流直角终端



公制螺纹类

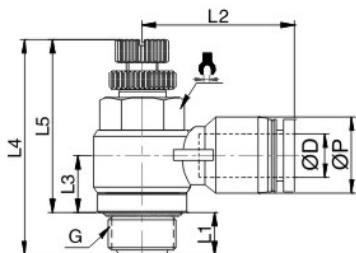
| 型号 | ØD | R | L1 | L2 | L3 | L4 | | L5 | | ØP |  |
|---------|----|--------|------|------|------|------|------|------|------|------|---|
| | | | | | | MIN | MAX | MIN | MAX | | |
| SC4-M3 | 4 | M3X0.5 | 3 | 19.5 | 7.5 | 28.5 | 31.5 | 25.5 | 28.5 | 11 | 8 |
| SC4-M5 | 4 | M5X0.8 | 3.5 | 19.5 | 7.5 | 29 | 32 | 25.5 | 28.5 | 11 | 8 |
| SC4-M6 | 4 | M6X1.0 | 4 | 19.5 | 7.5 | 29.5 | 32.5 | 25.5 | 28.5 | 11 | 8 |
| SC4-01 | 4 | R1/8 | 7.5 | 22.5 | 10.5 | 35 | 40 | 31 | 36 | 11 | 12 |
| SC4-02 | 4 | R1/4 | 10.5 | 24.5 | 12.5 | 41 | 46.5 | 35 | 40.5 | 13 | 14 |
| SC6-M3 | 6 | M3X0.5 | 3 | 21.5 | 8.5 | 28.5 | 31.5 | 25.5 | 28.5 | 13 | 8 |
| SC6-M5 | 6 | M5X0.8 | 3.5 | 21.5 | 8.5 | 29 | 32 | 25.5 | 28.5 | 13 | 8 |
| SC6-M6 | 6 | M6X1.0 | 4 | 21.5 | 8.5 | 29.5 | 32.5 | 25.5 | 28.5 | 13 | 8 |
| SC6-01 | 6 | R1/8 | 7.5 | 22.5 | 10.5 | 35 | 40 | 31 | 36 | 13 | 12 |
| SC6-02 | 6 | R1/4 | 10.5 | 24.5 | 12.5 | 41 | 46.5 | 35 | 40.5 | 13 | 14 |
| SC6-03 | 6 | R3/8 | 11.5 | 26.5 | 13.5 | 46.5 | 52 | 40 | 45.5 | 13 | 19 |
| SC6-04 | 6 | R1/2 | 15 | 32 | 18 | 54 | 60 | 46 | 52 | 14.5 | 24 |
| SC8-M5 | 8 | M5X0.8 | 3.5 | 24.5 | 10 | 32.5 | 35.5 | 29 | 32 | 14.5 | 8 |
| SC8-M6 | 8 | M6X1.0 | 4 | 24.5 | 10 | 33 | 36 | 29 | 32 | 14.5 | 8 |
| SC8-01 | 8 | R1/8 | 7.5 | 25 | 11.5 | 35 | 40 | 31 | 36 | 14.5 | 12 |
| SC8-02 | 8 | R1/4 | 10.5 | 28 | 13 | 41 | 46.5 | 35 | 40.5 | 14.5 | 14 |
| SC8-03 | 8 | R3/8 | 11.5 | 29 | 14.5 | 46.5 | 52 | 40 | 45.5 | 14.5 | 19 |
| SC8-04 | 8 | R1/2 | 15 | 32 | 18 | 54 | 60 | 46 | 52 | 14.5 | 24 |
| SC10-01 | 10 | R1/8 | 7.5 | 30.5 | 13.5 | 35 | 40 | 31 | 36 | 18.5 | 12 |
| SC10-02 | 10 | R1/4 | 10.5 | 32.5 | 15 | 41 | 46.5 | 35 | 40.5 | 18.5 | 14 |
| SC10-03 | 10 | R3/8 | 11.5 | 33 | 16.5 | 46.5 | 52 | 40 | 45.5 | 18.5 | 19 |
| SC10-04 | 10 | R1/2 | 15 | 36 | 18 | 54 | 60 | 46 | 52 | 18.5 | 24 |
| SC12-01 | 12 | R1/8 | 7.5 | 33 | 15 | 38 | 43 | 34 | 39 | 21 | 14 |
| SC12-02 | 12 | R1/4 | 10.5 | 33 | 16.5 | 41 | 46.5 | 35 | 40.5 | 21 | 14 |
| SC12-03 | 12 | R3/8 | 11.5 | 35 | 18 | 46.5 | 52 | 40 | 45.5 | 21 | 19 |
| SC12-04 | 12 | R1/2 | 15 | 36 | 19.5 | 54 | 60 | 46 | 52 | 21 | 24 |
| SC16-04 | 16 | R1/2 | 15 | 39 | 22 | 54 | 60 | 46 | 52 | 26 | 24 |

节流阀

Series

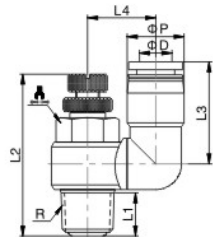
带快插接头的单向节流阀

SC-G 节流直角终端



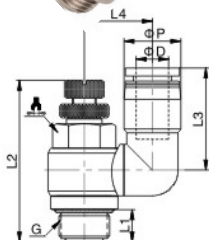
| 型号 | ØD | G | L1 | L2 | L3 | L4 | | L5 | | ØP | |
|----------|----|------|-----|------|------|------|------|------|------|------|----|
| | | | | | | MIN | MAX | MIN | MAX | | |
| SC4-G01 | 4 | G1/8 | 5.5 | 22.5 | 9 | 35 | 40 | 29.5 | 34.5 | 11 | 12 |
| SC4-G02 | 4 | G1/4 | 8.5 | 24.5 | 10 | 41 | 46.5 | 32.5 | 38 | 13 | 14 |
| SC6-G01 | 6 | G1/8 | 5.5 | 22.5 | 9 | 35 | 40 | 29.5 | 34.5 | 13 | 12 |
| SC6-G02 | 6 | G1/4 | 8.5 | 24.5 | 10 | 41 | 46.5 | 32.5 | 38 | 13 | 14 |
| SC6-G03 | 6 | G3/8 | 9.5 | 26.5 | 11 | 46.5 | 52 | 37 | 42.5 | 13 | 19 |
| SC6-G04 | 6 | G1/2 | 12 | 32 | 14.5 | 54 | 60 | 42 | 48 | 14.5 | 24 |
| SC8-G01 | 8 | G1/8 | 5.5 | 25 | 10 | 35 | 40 | 29.5 | 34.5 | 14.5 | 12 |
| SC8-G02 | 8 | G1/4 | 8.5 | 28 | 10.5 | 41 | 46.5 | 32.5 | 38 | 14.5 | 14 |
| SC8-G03 | 8 | G3/8 | 9.5 | 29 | 11.5 | 46.5 | 52 | 37 | 42.5 | 14.5 | 19 |
| SC8-G04 | 8 | G1/2 | 12 | 32 | 14.5 | 54 | 60 | 42 | 48 | 14.5 | 24 |
| SC10-G01 | 10 | G1/8 | 5.5 | 30.5 | 12 | 35 | 40 | 29.5 | 34.5 | 18.5 | 12 |
| SC10-G02 | 10 | G1/4 | 8.5 | 32.5 | 12.5 | 41 | 46.5 | 32.5 | 38 | 18.5 | 14 |
| SC10-G03 | 10 | G3/8 | 9.5 | 33 | 13.5 | 46.5 | 52 | 37 | 42.5 | 18.5 | 19 |
| SC10-G04 | 10 | G1/2 | 12 | 36 | 14.5 | 54 | 60 | 42 | 48 | 18.5 | 24 |
| SC12-G02 | 12 | G1/4 | 8.5 | 33 | 14 | 41 | 46.5 | 32.5 | 38 | 21 | 14 |
| SC12-G03 | 12 | G3/8 | 9.5 | 35 | 15 | 46.5 | 52 | 37 | 42.5 | 21 | 19 |
| SC12-G04 | 12 | G1/2 | 12 | 36 | 16 | 54 | 60 | 42 | 48 | 21 | 24 |
| SC16-G04 | 16 | G1/2 | 12 | 39 | 18 | 54 | 60 | 42 | 48 | 26 | 24 |

SS-R 节流转臂终端



| 型号 | ØD | R | L1 | L2 | | L3 | L4 | ØP | |
|---------|----|--------|------|------|------|------|------|------|----|
| | | | | MIN | MAX | | | | |
| SS4-M5 | 4 | M5X0.8 | 3.5 | 29 | 31.5 | 17 | 10 | 9 | 8 |
| SS6-01 | 6 | R1/8 | 7.5 | 35 | 41 | 18 | 13 | 11 | 12 |
| SS6-02 | 6 | R1/4 | 10.5 | 40.5 | 46 | 18 | 15 | 11 | 14 |
| SS8-01 | 8 | R1/8 | 7.5 | 35 | 41 | 25.5 | 15.5 | 14.5 | 12 |
| SS8-02 | 8 | R1/4 | 10.5 | 40.5 | 46 | 25.5 | 17 | 14.5 | 14 |
| SS10-02 | 10 | R1/4 | 10.5 | 40.5 | 46 | 27.5 | 20.5 | 18.5 | 14 |
| SS10-03 | 10 | R3/8 | 11.5 | 46.5 | 52 | 27.5 | 22 | 18.5 | 19 |
| SS12-02 | 12 | R1/4 | 10.5 | 40.5 | 46 | 29.5 | 22 | 21 | 14 |
| SS12-03 | 12 | R3/8 | 11.5 | 46.5 | 52 | 29.5 | 23 | 21 | 19 |

SS-G 节流转臂终端



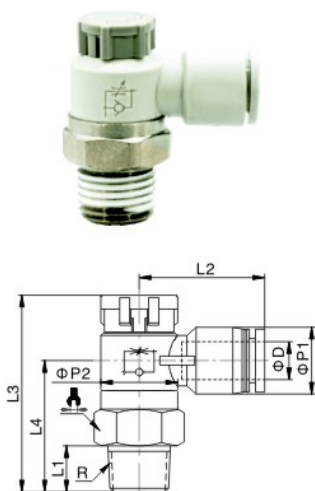
| 型号 | ØD | G | L1 | L2 | | L3 | L4 | ØP | |
|----------|----|------|------|------|-----|------|------|------|----|
| | | | | MIN | MAX | | | | |
| SS6-G01 | 6 | R1/8 | 7.5 | 35 | 41 | 18 | 13 | 11 | 12 |
| SS6-G02 | 6 | R1/4 | 10.5 | 40.5 | 46 | 18 | 15 | 11 | 14 |
| SS8-G01 | 8 | R1/8 | 7.5 | 35 | 41 | 25.5 | 15.5 | 14.5 | 12 |
| SS8-G02 | 8 | R1/4 | 10.5 | 40.5 | 46 | 25.5 | 17 | 14.5 | 14 |
| SS10-G02 | 10 | R1/4 | 10.5 | 40.5 | 46 | 27.5 | 20.5 | 18.5 | 14 |
| SS10-G03 | 10 | R3/8 | 11.5 | 46.5 | 52 | 27.5 | 22 | 18.5 | 19 |
| SS12-G02 | 12 | R1/4 | 10.5 | 40.5 | 46 | 29.5 | 22 | 21 | 14 |
| SS12-G03 | 12 | R3/8 | 11.5 | 46.5 | 52 | 29.5 | 23 | 21 | 19 |

节流阀

Series

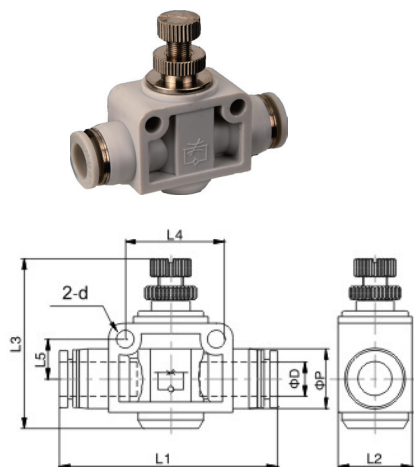
带快插接头的单向节流阀

ZSC 节流自锁终端



| 型号 | ØD | R | L1 | L2 | L3 | | L4 | ØP1 | ØP2 | |
|----------|----|--------|-----|------|------|------|------|------|-----|----|
| | | | | | MIN | MAX | | | | |
| ZSC4-M5 | 4 | M5X0.8 | 3.5 | 17 | 26.5 | 27.5 | 17.5 | 9 | 9 | 9 |
| ZSC4-01 | 4 | R1/8 | 7.5 | 20.5 | 35 | 36.5 | 23.5 | 11 | 13 | 14 |
| ZSC6-M5 | 6 | M5X0.8 | 3.5 | 18 | 26.5 | 27.5 | 17.5 | 11 | 9 | 9 |
| ZSC6-01 | 6 | R1/8 | 7.5 | 22 | 35 | 36.5 | 23 | 13 | 16 | 14 |
| ZSC6-02 | 6 | R1/4 | 10 | 24 | 39 | 40.5 | 26.5 | 13 | 17 | 17 |
| ZSC8-01 | 8 | R1/8 | 7.5 | 24.5 | 35 | 36.5 | 23 | 14.4 | 13 | 14 |
| ZSC8-02 | 8 | R1/4 | 10 | 26 | 39 | 40.5 | 26.5 | 14.5 | 17 | 17 |
| ZSC8-03 | 8 | R3/8 | 11 | 26 | 42 | 43.5 | 29 | 14.5 | 19 | 19 |
| ZSC10-02 | 10 | R1/4 | 10 | 28 | 39 | 40.5 | 26.5 | 18.5 | 17 | 17 |
| ZSC10-03 | 10 | R3/8 | 11 | 29 | 42 | 43.5 | 28.5 | 18.5 | 19 | 19 |
| ZSC10-04 | 10 | R1/2 | 14 | 31.5 | 50 | 51.5 | 35.5 | 18.5 | 24 | 24 |
| ZSC12-03 | 12 | R3/8 | 11 | 32 | 42 | 43.5 | 29 | 21 | 19 | 19 |
| ZSC12-04 | 12 | R1/2 | 14 | 34 | 50 | 51.5 | 35.5 | 21 | 24 | 24 |

SCF 节流联管直通



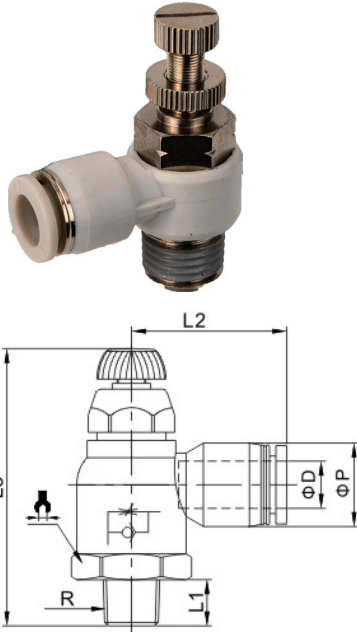
| 型号 | ØD | L1 | L2 | L3 | | L4 | L5 | ØP | Ød |
|-------|----|------|------|------|------|----|-----|------|-----|
| | | | | MIN | MAX | | | | |
| SCF4 | 4 | 40 | 11.5 | 27 | 29.5 | 14 | 6.5 | 11 | 3.2 |
| SCF6 | 6 | 47 | 15 | 39 | 44.5 | 20 | 8.5 | 13 | 4.2 |
| SCF8 | 8 | 52 | 18 | 42.5 | 47.5 | 22 | 9.5 | 14.5 | 4.2 |
| SCF10 | 10 | 63.5 | 21 | 46.5 | 52.5 | 26 | 11 | 18.5 | 4.2 |
| SCF12 | 12 | 74 | 28 | 54 | 59 | 32 | 14 | 21 | 4.2 |

节流阀

Series

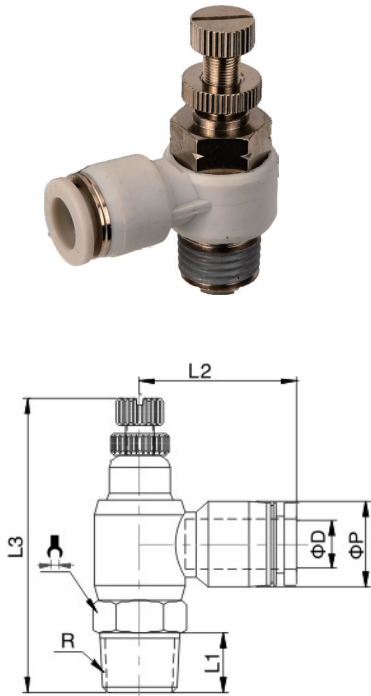
带快插接头的单向节流阀

DSC-I 大流量节流直角终端



| 型号 | ØD | R | L1 | L2 | L3 | | ØP | |
|-----------|----|------|------|------|------|------|------|----|
| | | | | | MIN | MAX | | |
| DSC8-01-I | 8 | R1/8 | 8 | 27.5 | 47.5 | 52 | 14.5 | 19 |
| DSC8-02-I | 8 | R1/4 | 11 | 27.5 | 50.5 | 55 | 14.5 | 19 |
| DSC8-03-I | 8 | R3/8 | 11.5 | 27.5 | 52 | 56.5 | 14.5 | 19 |

DSC-II 大流量节流直角终端



| 型号 | ØD | R | L1 | L2 | L3 | | ØP | |
|------------|----|------|----|------|------|------|------|----|
| | | | | | MIN | MAX | | |
| DSC8-01-II | 8 | R1/8 | 8 | 26.5 | 46.5 | 51.5 | 14.5 | 14 |
| DSC8-02-II | 8 | R1/4 | 11 | 26.5 | 49.5 | 54.5 | 14.5 | 14 |