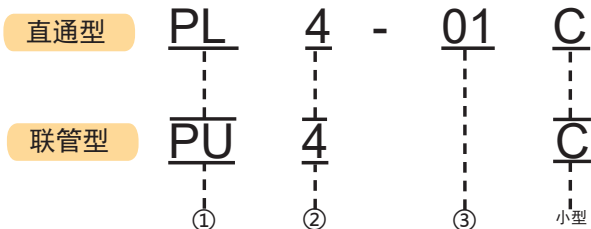


小型快插接头

Series

气动用超小型管接头

型式表示方法



①接头型号

②配套管材直径

代码	3	4	6
管长 (m)	Ø4	Ø6	Ø8

③螺纹规格

类型	公制螺纹			55° 锥管螺纹	55° 直管螺纹
代码	M3	M5	M6	01	G01
规格	M3X0.5	M5X0.8	M6X1	R1/8	G1/8

产品特点

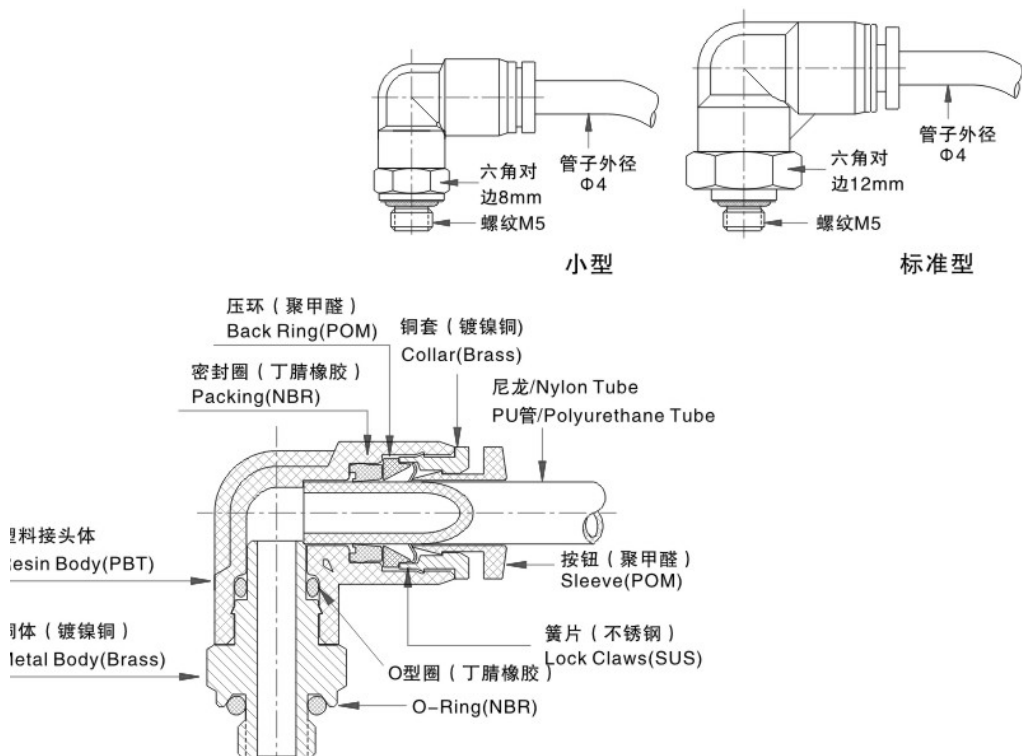
- 气动用超小型快插式气动管接头。
- 体积为标准型管接头的 40%，成功实现小型化。
- 拆卸管子用的释放环为椭圆形和园形两种，虽然是超小型，拆卸仍方便。
- 镀镍的铜体可以防腐蚀和污染。

技术规格

使用流体	空气、水（有条件）
工作压力范围	0~1.0Mpa
使用真空压力	-100Kpa(10Torr)
工作温度范围	0~60°C

警告：在有水的条件下，使用温度为 0~60°C，工作压力为 0-0.3Mpa，应无水锤（冲击流）等，务必检查确认已插好管子。

结构示意图

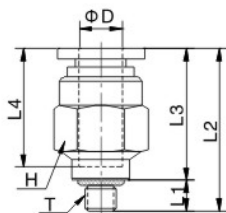


小型快插接头

气动用超小型管接头

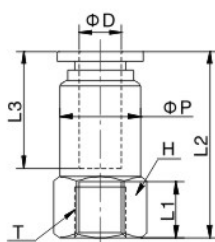
Series

PC 直通终端



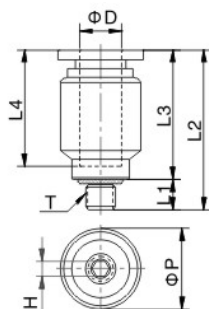
型号	ØD	T	L1	L2	L3	L4	对边 H
PC3-M3C	3	M3X0.5	3	15.5	12.5	9.5	8
PC3-M5C	3	M5X0.8	3.5	16	12.5	9.5	8
PC3-M6C	3	M6X1.0	4	16.5	12.5	9.5	8
PC4-M3C	4	M3X0.5	3	16	13	11	8
PC4-M5C	4	M5X0.8	3.5	17	13.5	11	8
PC4-M6C	4	M6X1.0	4	17.5	13.5	11	8
PC4-01C	4	R1/8	7.5	18	14	11	10
PC6-M5C	6	M5X0.8	3.5	17.5	14	11.5	10
PC6-M6C	6	M6X1.0	4	18	14	11.5	10
PC6-01C	6	R1/8	7.5	18	14	11.5	10

PCF 内螺纹直通终端



型号	ØD	T	L1	L2	L3	ØP	对边 H
PCF3-M3C	3	M3X0.5	4	16	9.5	8	8
PCF3-M5C	3	M5X0.8	5	17.5	9.5	8	8
PCF3-M6C	3	M6X1.0	5	17.5	9.5	8	8
PCF4-M3C	4	M3X0.5	4	17.5	11	8	8
PCF4-M5C	4	M5X0.8	5	19	11	8	8
PCF4-M6C	4	M6X1.0	5	19	11	8	8
PCF4-01C	4	R1/8	7.5	22	11	8	12
PCF6-M5C	6	M5X0.8	5	19	11.5	10	10
PCF6-M6C	6	M6X1.0	5	19	11.5	10	10
PCF6-01C	6	R1/8	7.5	22	11.5	10	12

POC 带内六角直通终端



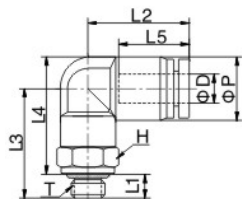
型号	ØD	T	L1	L2	L3	L4	ØP	对边 H
POC3-M3C	3	M3X0.5	3	15.5	12.5	9.5	8	1.5
POC3-M5C	3	M5X0.8	3.5	16	12.5	9.5	8	2
POC3-M6C	3	M6X1.0	4	16.5	12.5	9.5	8	2
POC4-M3C	4	M3X0.5	3	16	13	11	8	1.5
POC4-M5C	4	M5X0.8	3.5	17	13.5	11	8	2
POC4-M6C	4	M6X1.0	4	17.5	13.5	11	8	2.5
POC4-01C	4	R1/8	7.5	18	14	11	10	3
POC6-M5C	6	M5X0.8	3.5	17.5	14	11.5	10	2
POC6-M6C	6	M6X1.0	4	18	14	11.5	10	2.5
POC6-01C	6	R1/8	7.5	18	14	11.5	10	4

小型快插接头

Series

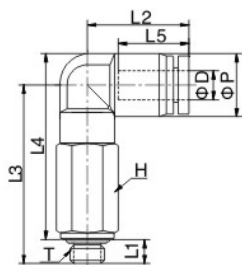
气动用超小型管接头

PL 直通终端



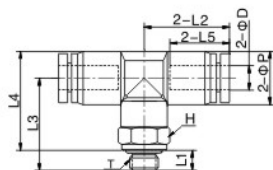
型号	ØD	T	L1	L2	L3	L4	L5	ØP	对边 H
PL3-M3C	3	M3X0.5	3	12	15.5	16	9.5	7	8
PL3-M5C	3	M5X0.8	3.5	12	16	16	9.5	7	8
PL3-M6C	3	M6X1.0	4	12	16.5	16	9.5	7	8
PL4-M3C	4	M3X0.5	3	14.5	15.5	17	11	9	8
PL4-M5C	4	M5X0.8	3.5	14.5	16	17	11	9	8
PL4-M6C	4	M6X1.0	4	14.5	16.5	17	11	9	8
PL4-01C	4	R1/8	7.5	14.5	19.5	20	11	9	10
PL6-M5C	6	M5X0.8	3.5	16.5	16	18	11.5	11	8
PL6-M6C	6	M6X1.0	4	16.5	16.5	18	11.5	11	8
PL6-01C	6	R1/8	7.5	16.5	19.5	21	11.5	11	10

PLL 长直通终端



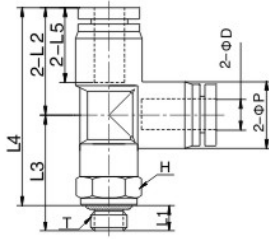
型号	ØD	T	L1	L2	L3	L4	L5	ØP	对边 H
PLL3-M3C	3	M3X0.5	3	12	23.5	24	9.5	7	8
PLL3-M5C	3	M5X0.8	3.5	12	24	24	9.5	7	8
PLL3-M6C	3	M6X1.0	4	12	24.5	24	9.5	7	8
PLL4-M3C	4	M3X0.5	3	14.5	26	27.5	11	9	8
PLL4-M5C	4	M5X0.8	3.5	14.5	26.5	27.5	11	9	8
PLL4-M6C	4	M6X1.0	4	14.5	27	27.5	11	9	8
PLL4-01C	4	R1/8	7.5	14.5	30	30.5	11	9	10
PLL6-M5C	6	M5X0.8	3.5	16.5	28	30	11.5	11	8
PLL6-M6C	6	M6X1.0	4	16.5	28.5	30	11.5	11	8
PLL6-01C	6	R1/8	7.5	16.5	31.5	33	11.5	11	10

PB T形三通终端



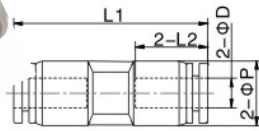
型号	ØD	T	L1	L2	L3	L4	L5	ØP	对边 H
PB3-M3C	3	M3X0.5	3	12	15.5	16	9.5	7	8
PB3-M5C	3	M5X0.8	3.5	12	16	16	9.5	7	8
PB3-M6C	3	M6X1.0	4	12	16.5	16	9.5	7	8
PB4-M3C	4	M3X0.5	3	14.5	15.5	17	11	9	8
PB4-M5C	4	M5X0.8	3.5	14.5	16	17	11	9	8
PB4-M6C	4	M6X1.0	4	14.5	16.5	17	11	9	8
PB4-01C	4	R1/8	7.5	14.5	19.5	20	11	9	10
PB6-M5C	6	M5X0.8	3.5	16.5	16	18	11.5	11	8
PB6-M6C	6	M6X1.0	4	16.5	16.5	18	11.5	11	8
PB6-01C	6	R1/8	7.5	16.5	19.5	21	11.5	11	10

PD T形角式三通终端



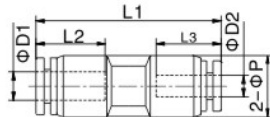
型号	ØD	T	L1	L2	L3	L4	L5	ØP	对边 H
PT3-M3C	3	M3X0.5	3	12	15.5	28	9.5	7	8
PT3-M5C	3	M5X0.8	3.5	12	16	28	9.5	7	8
PT3-M6C	3	M6X1.0	4	12	16.5	28	9.5	7	8
PT4-M3C	4	M3X0.5	3	14.5	15.5	31.5	11	9	8
PT4-M5C	4	M5X0.8	3.5	14.5	16	31.5	11	9	8
PT4-M6C	4	M6X1.0	4	14.5	16.5	31.5	11	9	8
PT4-01C	4	R1/8	7.5	14.5	19.5	34.5	11	9	10
PT6-M5C	6	M5X0.8	3.5	16.5	16	34.5	11.5	11	8
PT6-M6C	6	M6X1.0	4	16.5	16.5	34.5	11.5	11	8
PT6-01C	6	R1/8	7.5	16.5	19.5	37.5	11.5	11	10

PU 联管直通



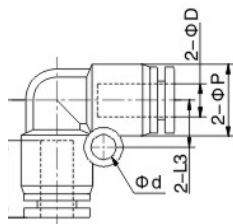
型号	ØD	L1	L2	ØP
PU3C	3	23.5	9.5	7
PU4C	4	27.5	11	9
PU6C	6	28	11.5	11

PG 异径联管直通



型号	ØD1	ØD2	L1	L2	L3	ØP
PG4-3C	4	3	27.5	11	9.5	9
PG6-3C	6	3	28	11.5	9.5	11
PG6-4C	6	4	28	11.5	11	11

PV 联管直角弯头



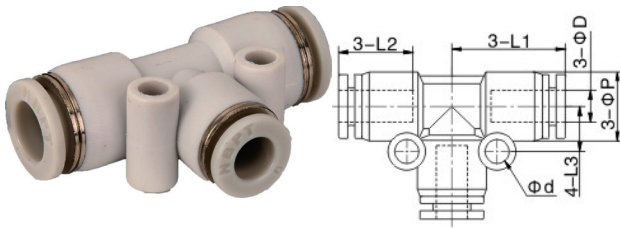
型号	ØD	L1	L2	L3	ØP	Ød
PV3C	3	12	5	9.5	7	3.2
PV4C	4	14.5	6	11	9	3.2
PV6C	6	16.5	6.5	11.5	11	3.2

小型快插接头

Series

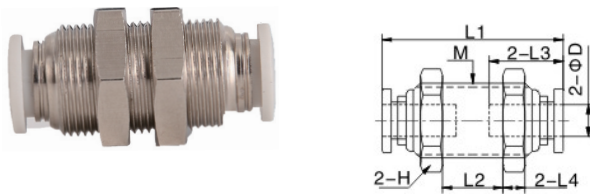
气动用超小型管接头

PE T 形联管三通



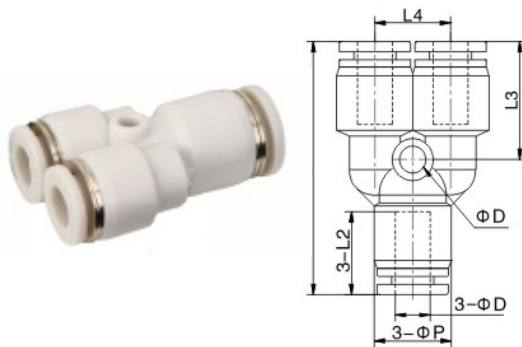
型号	ØD	L1	L2	L3	ØP	Ød
PE3C	3	12	5	9.5	7	3.2
PE4C	4	14.5	6	11	9	3.2
PE6C	6	16.5	6.5	11.5	11	3.2

PM 隔板联管直通



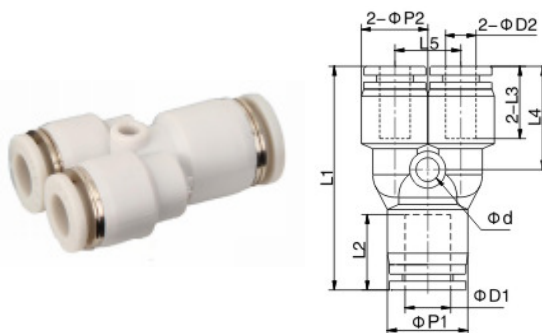
型号	ØD	L1	L2	L3	L4	H
PM3C	3	20.5	6	9.5	2.5	10
PM4C	4	23	8	11	3	12
PM6C	6	24	9	11.5	3.5	14

PY Y 形联管三通



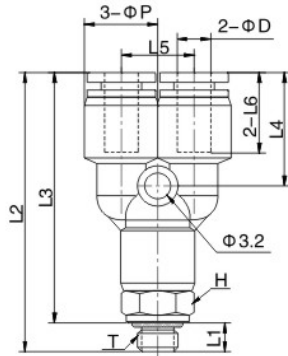
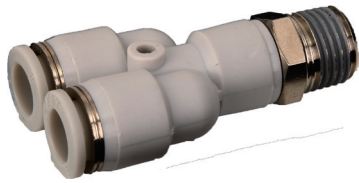
型号	ØD	L1	L2	L3	L4	ØP	Ød
PY3C	3	27	7	9	12	7	3.2
PY4C	4	30	9	11	14	9.5	3.2
PY6C	6	33	11	11.5	15	11	3.2

PW Y 形异径联管三通



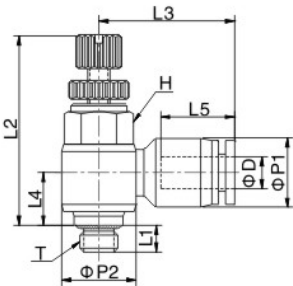
型号	ØD1	ØD2	L1	L2	L3	L4	L5	ØP1	ØP2	Ød
PW4-3C	4	3	27.5	12	7	11	9.5	9	7	3.2
PW6-3C	6	3	30	13.5	9	11.5	9.5	11	9	3.2
PW6-4C	6	4	30.5	14	9	11.5	11	11	9	3.2

PX Y形三通终端



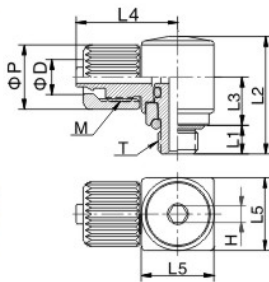
型号	ØD1	T	L1	L2	L3	L4	L5	L6	ØP	H
PX3-M3C	3	M3X0.5	3	31.5	28.5	12	7	9.5	7	8
PX3-M5C	3	M5X0.8	3.5	32	28.5	12	7	9.5	7	8
PX3-M6C	3	M6X1.0	4	32.5	28.5	12	7	9.5	7	8
PX4-M3C	4	M3X0.5	3	34	31	14	9	11	9	8
PX4-M5C	4	M5X0.8	3.5	34.5	31	14	9	11	9	8
PX4-M6C	4	M6X1.0	4	35	31	14	9	11	9	8
PX4-01C	4	R1/8	7.5	37.5	33.5	14	9	11	9	10
PX6-M5C	6	M5X0.8	3.5	37	33.5	15	11	11.5	11	8
PX6-M6C	6	M6X1.0	4	37.5	33.5	15	11	11.5	11	8
PX6-01C	6	R1/8	7.5	40	36	15	11	11.5	11	10

SC 小型调速直角终端



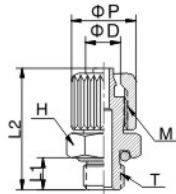
型号	ØD	T	L1	L2		L3	L4	L5	ØP1	ØP2	H
				max	min						
SC4-M3C	4	M3X0.5	3	28	25.5	18	7	11	9	9.5	8
SC4-M5C	4	M5X0.8	3.5	28	25.5	18	7	11	9	9.5	8
SC4-M6C	4	M6X1.0	4	28.5	26	18	7	11	9	9.5	8

TL 微型锁母式直角终端



型号	ØD	T	L1	L2	L3	L4	L5	ØP	M	H
TL4-M5	4	M5X0.8	3.5	14.5	6	12.5	12.5	8	M6X0.75	2
TL4-M6	4	M6X1.0	4	17	6.5	13.5	13.5	8	M6X0.75	3
TL4-G01	4	G1/8	5.5	21	8	14	15	8	M6X0.75	5
TL6-M5	6	M5X0.8	3.5	14.5	6	14	14	10	M8X0.75	2
TL6-M6	6	M6X1.0	4	17	6.5	15	15	10	M8X0.75	3
TL6-G01	6	G1/8	5.5	21	8	16.5	16.5	10	M8X0.75	5

TC 微型锁母式直角终端



型号	ØD	T	L1	L2	ØP	M	H
TC4-M5	4	M5X0.8	3.5	15	8	M6X0.75	8
TC4-M6	4	M6X1.0	4	15.5	8	M6X0.75	8
TC4-G01	4	G1/8	5.5	19	8	M6X0.75	10
TC6-M5	6	M5X0.8	3.5	16.5	10	M8X0.75	10
TC6-M6	6	M6X1.0	4	17	10	M8X0.75	10
TC6-G01	6	G1/8	5.5	21	10	M8X0.75	10